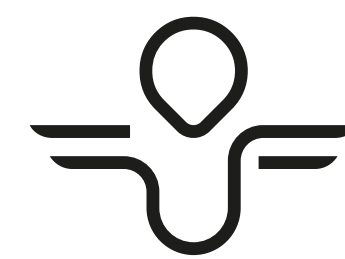


Garde Boue Arrière

Rear mudguard



Notice de montage
Assembly instructions

Compatibilité :
Compatibility:

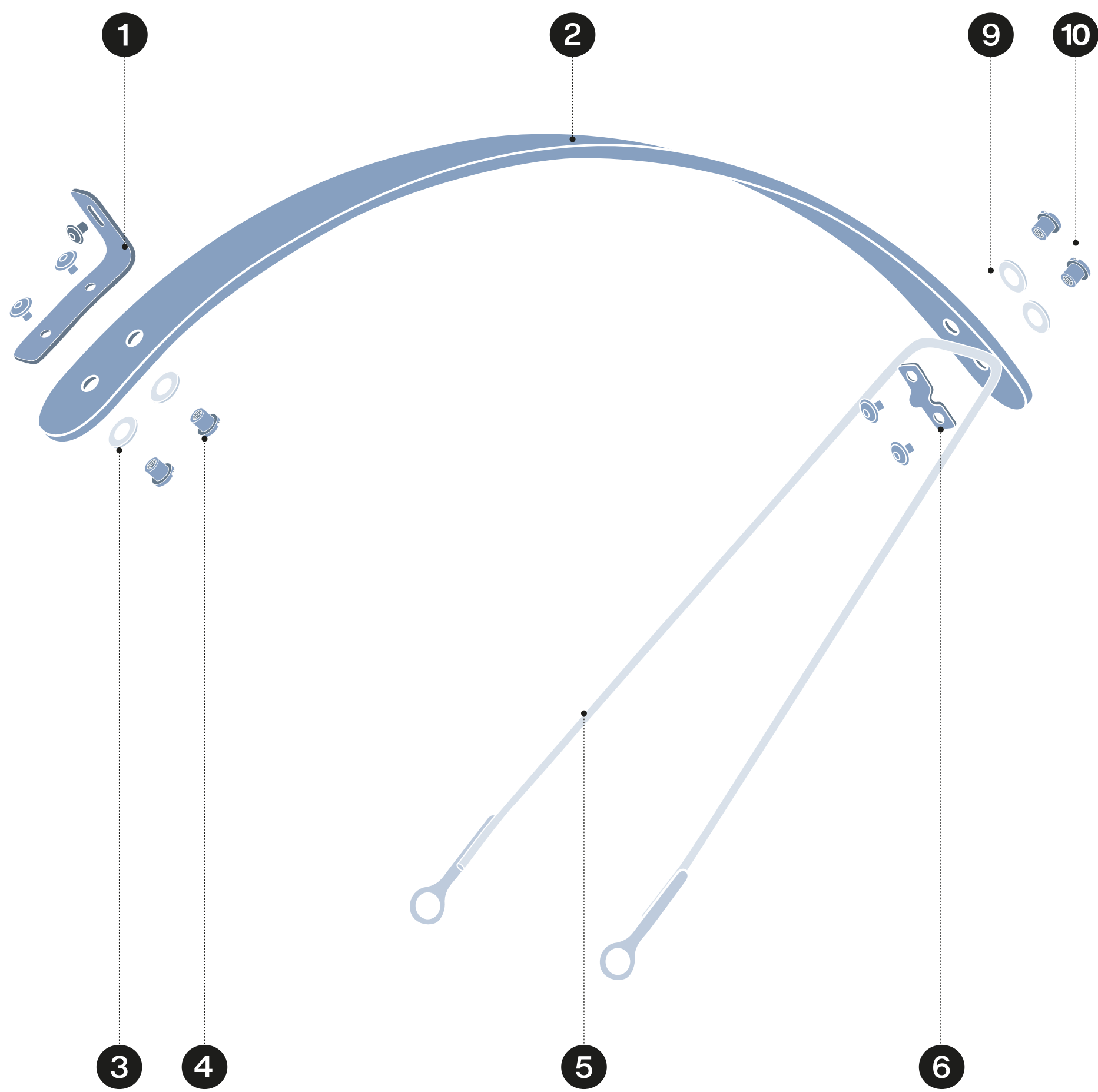
Angell



Glossaire

Glossary

Garde Boue Arrière
Rear mudguard



Réf.
Réf.

Pièces détachées
Component parts

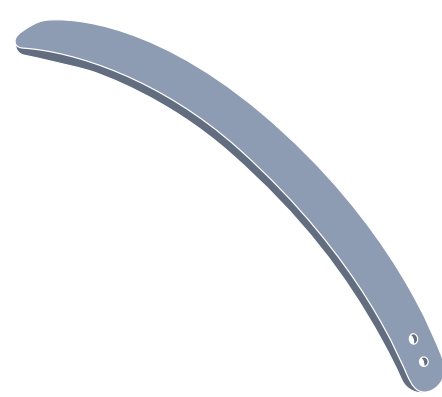
12 Types
12 Types

1 x 1



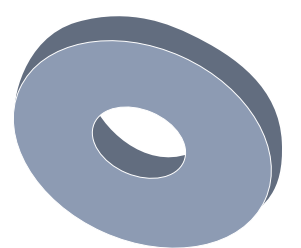
Support fixation haute
Upper mounting bracket

2 x 1



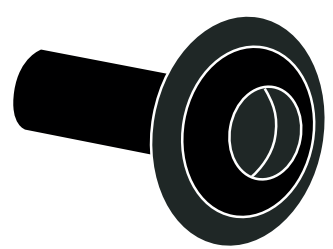
Pièce en bois
Wooden part

3 x 2



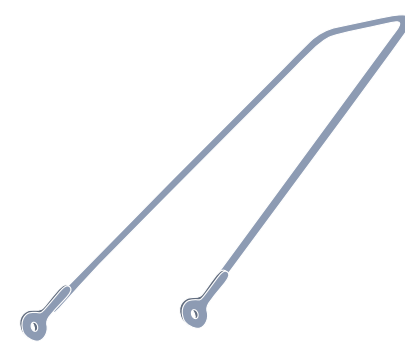
Rondelles M5x16
M5x16 washers

4 x 5



Vis TBHC M5x6
M5x6 BHC screw

5 x 1



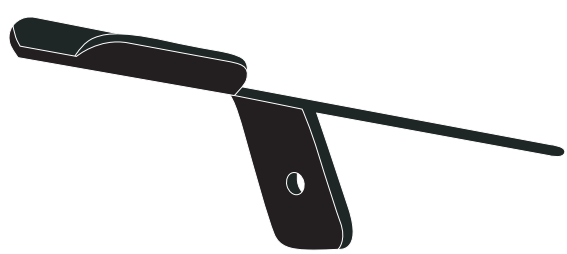
Tringle métallique
Metallic rod

6 x 1



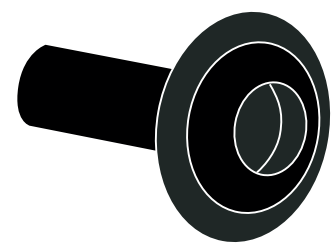
Support fixation bas
Low mounting bracket

7 x 1



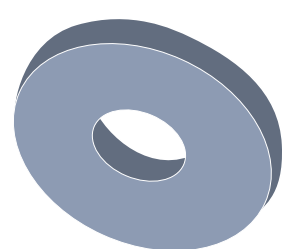
Support fixation batterie
Battery mounting bracket

8 x 2



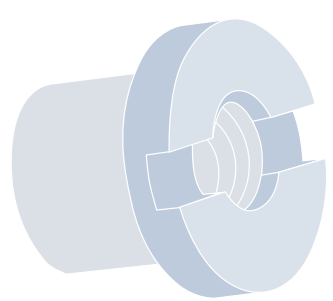
Vis M4x12 TBHC
M4x12 BHC screw

9 x 2



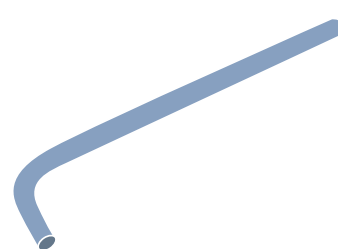
Rondelles M8x16
M8x16 washers

10 x 2



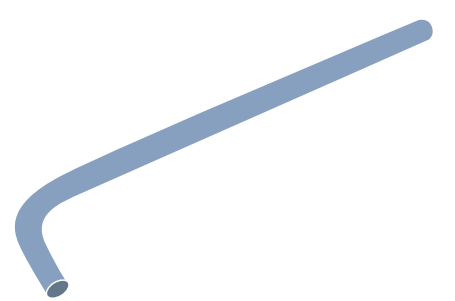
Écrous M5x6
M5x6 nut

x 1



Clé allen M4
M4 allen spanner

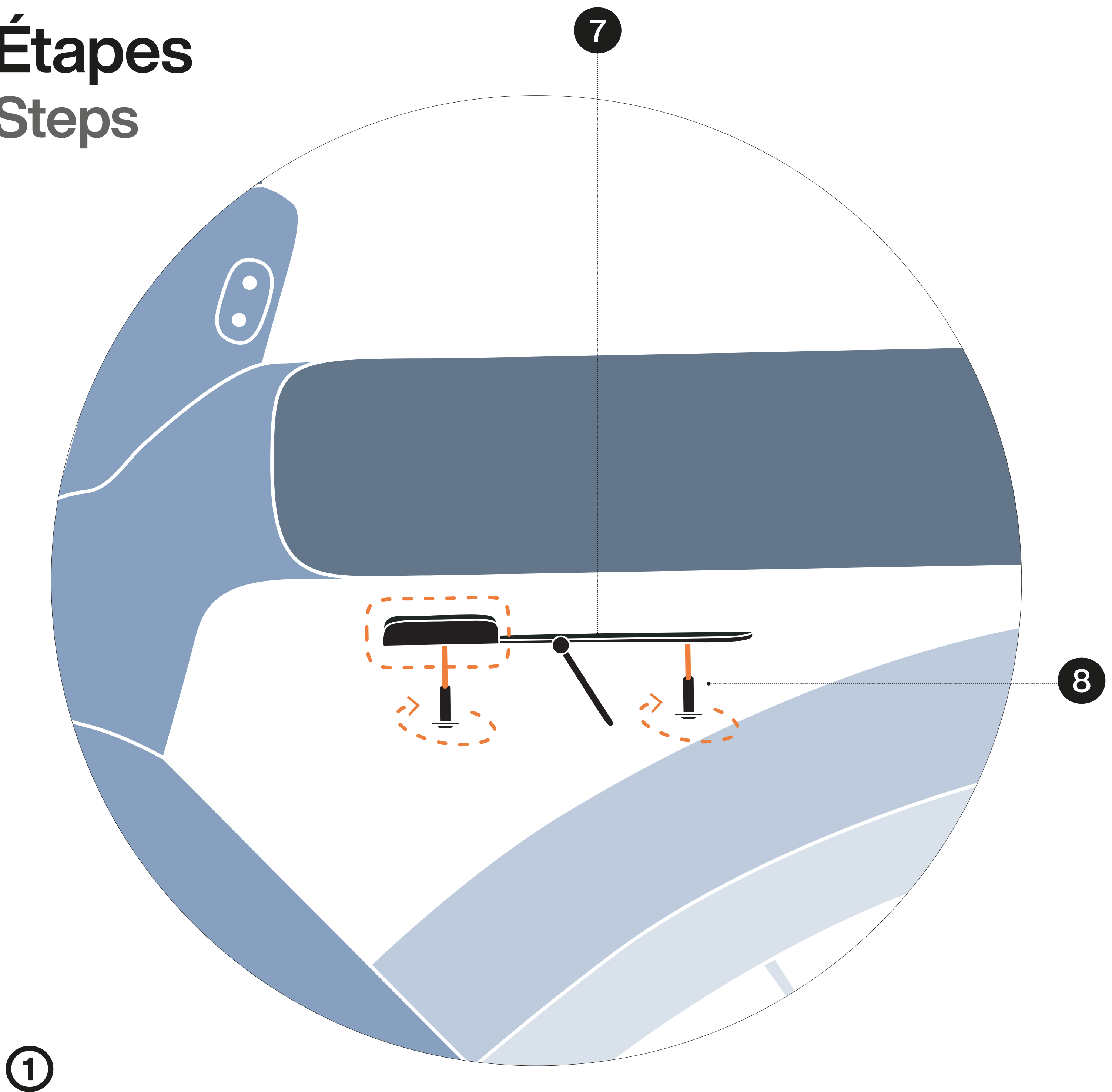
x 1



Clé allen M5
M5 allen spanner

Étapes

Steps



Vissez les 2 vis M4x12 au travers du support de fixation batterie dans les deux trous taraudés situés sous la languette batterie.

Couple de serrage $2.2N.m \pm 0.2$

Assurez-vous que les languettes anti-rotation du support batterie soient positionnées vers le poste de pilotage du vélo.

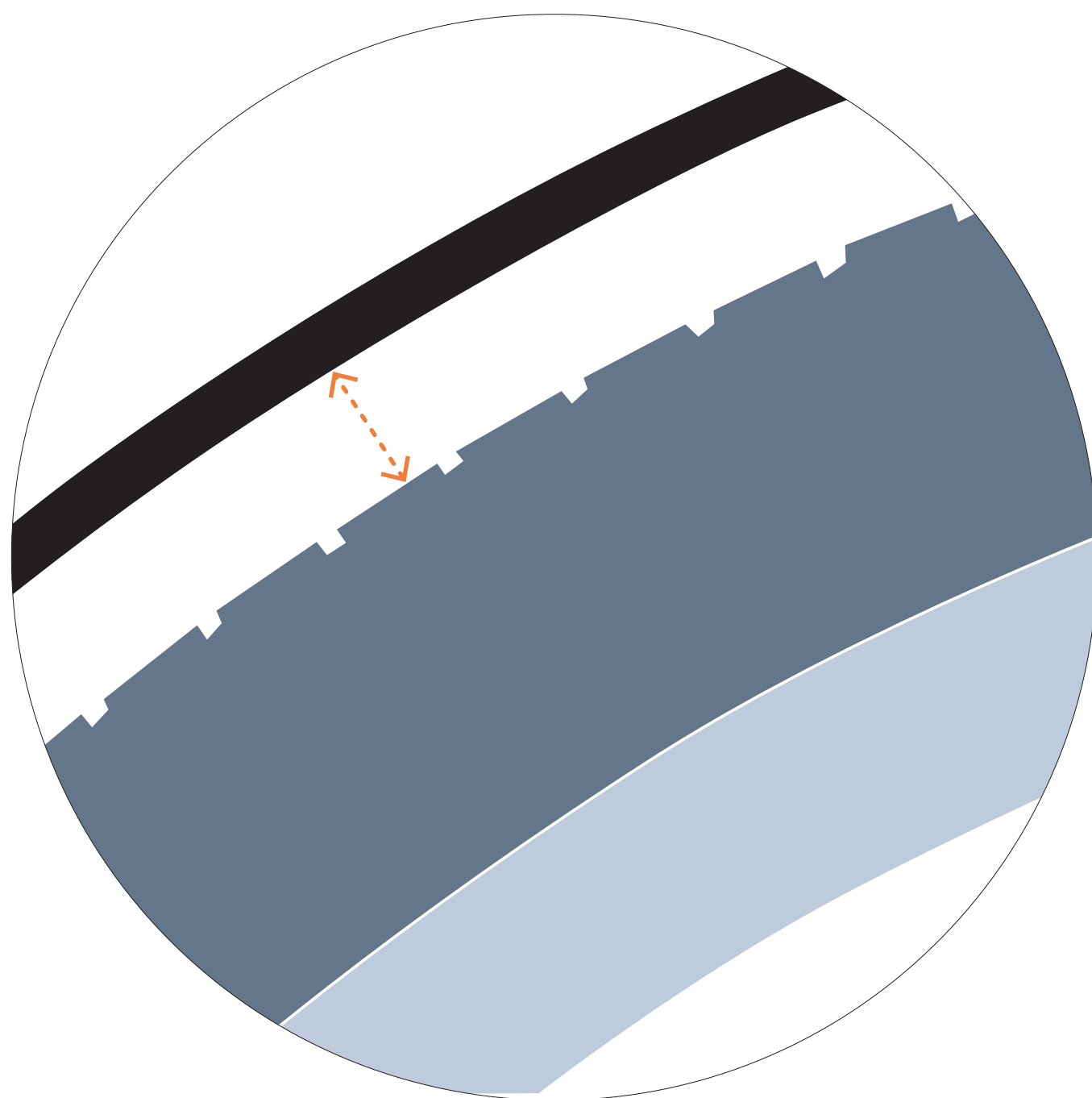
Screw the 2 M4x12 screws through the battery mounting bracket into the two threaded holes below the battery tab.

$2.2N.m \pm 0.2$ tightening torque

Check that the anti-rotation plates of the battery mounting bracket are positioned toward the bike cockpit.

Étapes

Steps



②

Positionner la partie en bois de façon à ce que l'espace entre le pneu et le bois soit suffisant.

Serrez la vis M5x6 au travers du support fixation haut et du support batterie.

Couple de serrage 2.2N.m ± 0.2 (TBC)

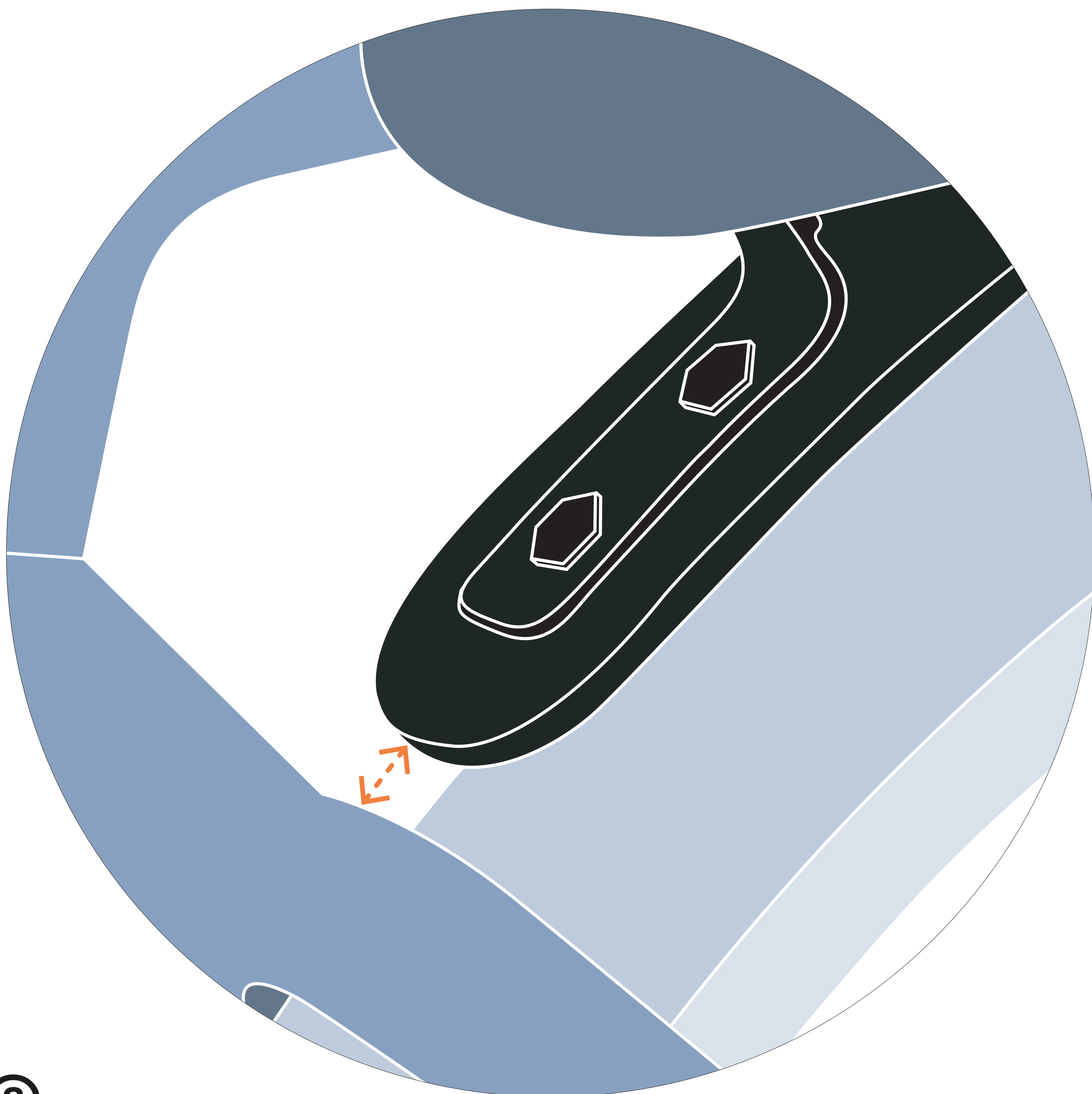
Position the wooden part to ensure that the space between the tyre and the wooden part is sufficient.

Tighten the M5x6 screw through the upper mounting bracket and the battery support.

2.2N.m ± 0.2 (TBC) tightening torque

Étapes

Steps



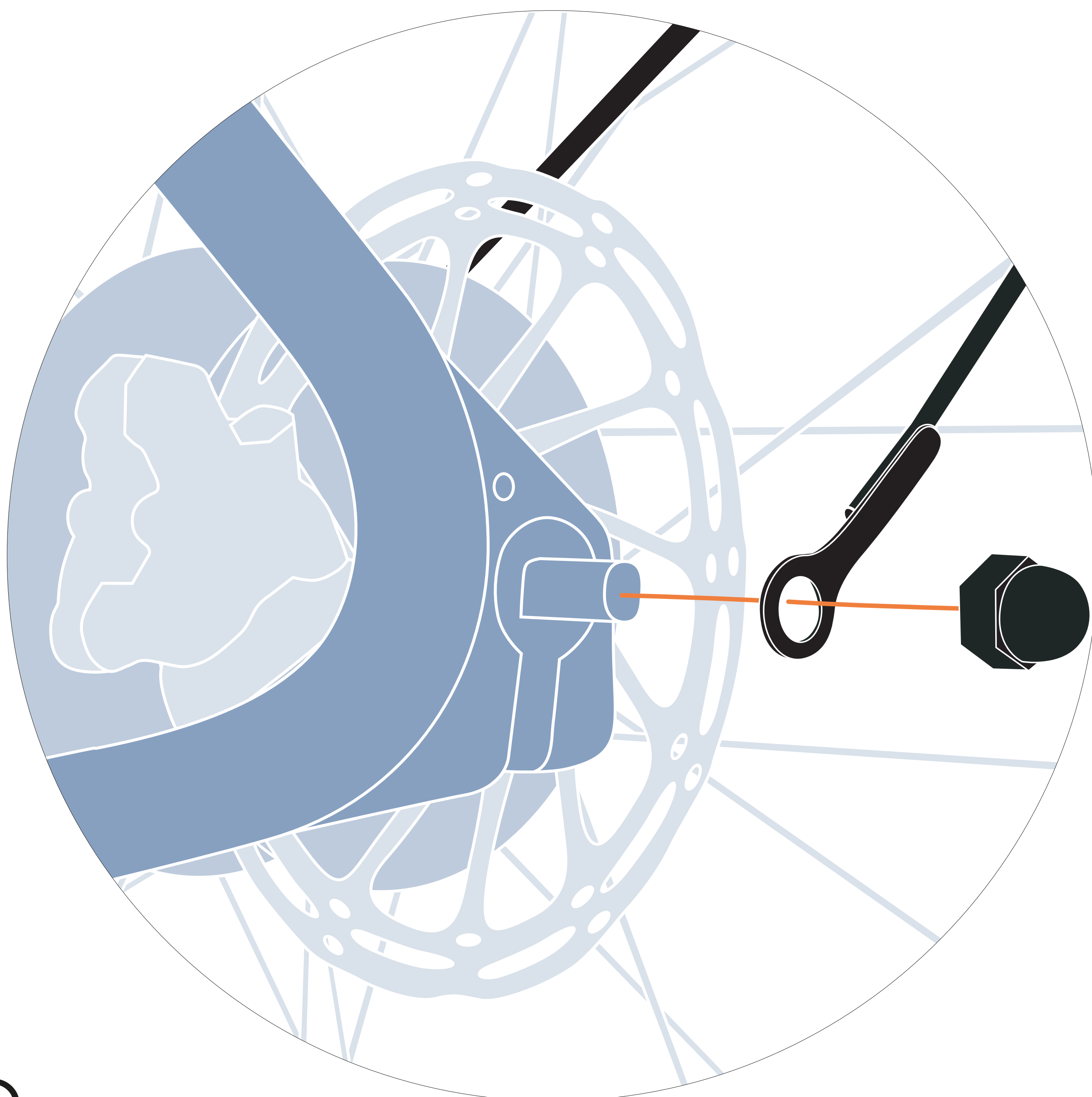
③

Assurez-vous que la partie bois ne soit pas en contact avec le cadre.

Check that the wooden part is not in contact with the bike frame.

Étapes

Steps



④

Insérer les tringles au travers de l'axe de roue arrière.

Serrez l'écrou M12 à l'aide d'une clé plate.

Couple de serrage $35\text{N.m} \pm 0.2\text{N.m}$ (TBC)

Insert the rods through the rear wheel axle

Tighten the M12 nut using a spanner

$35\text{N.m} \pm 0.2\text{N.m}$ (TBC) tightening torque