

# Garde Boue Avant

Front mudguard



Notice de montage

Assembly instructions

Compatibilité :

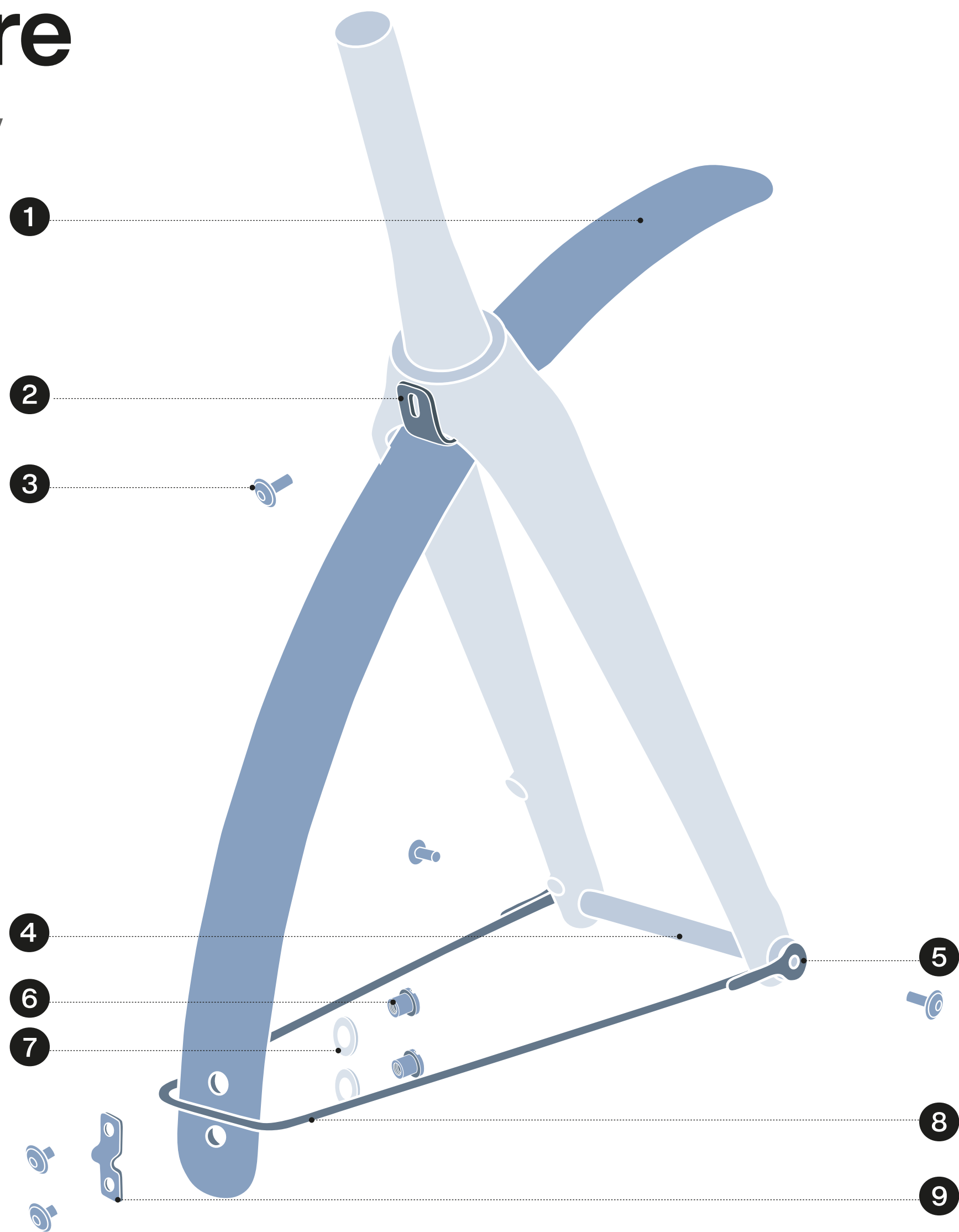
Compatibility:

Angell - Angell /S



# Glossaire

## Glossary



Garde Boue Avant  
Front mudguard

Vue d'ensemble  
Overview

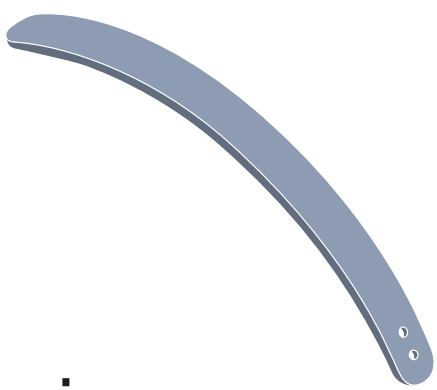
Réf.  
Réf.

Pièces détachées  
Component parts

10 Types  
10 Types

**1** x 1

Pièce en bois  
Wooden part



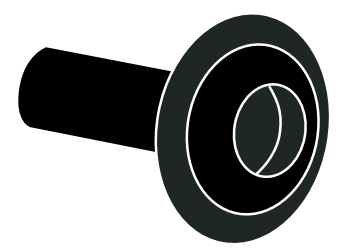
**2** x 1

Support fixation haute  
Upper mounting bracket



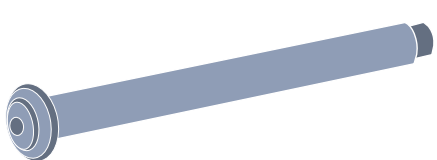
**3** x 3

Vis TBHC M5x12  
M5x12 BHC screw



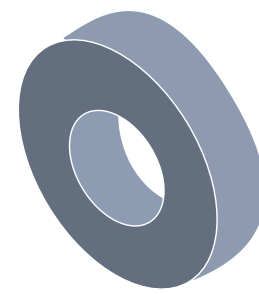
**4** x 1

Axe de roue Avant  
Front wheel axle



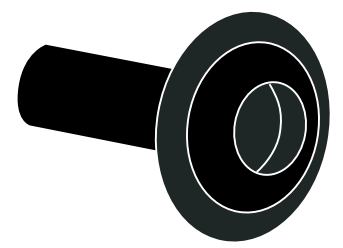
**5** x 1

Rondelle axe roue Avant  
Front wheel axle washer



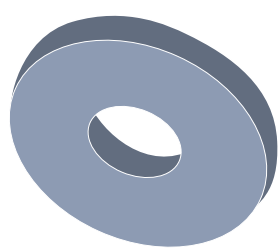
**6** x 4

Vis TBHC M5x6  
M5x6 BHC screw



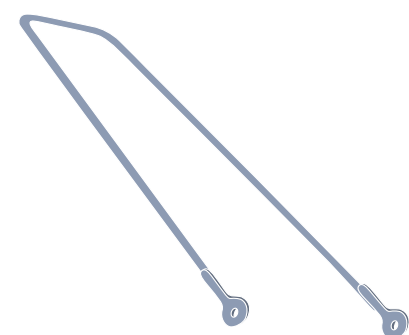
**7** x 4

Rondelles M8x16  
M8x16 washers



**8** x 1

Tringle métallique  
Metallic rod



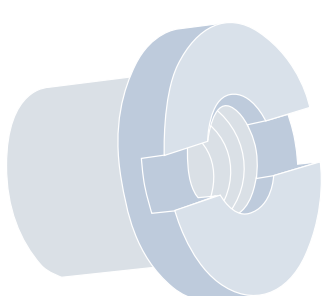
**9** x 1

Support fixation basse  
Lower mounting bracket



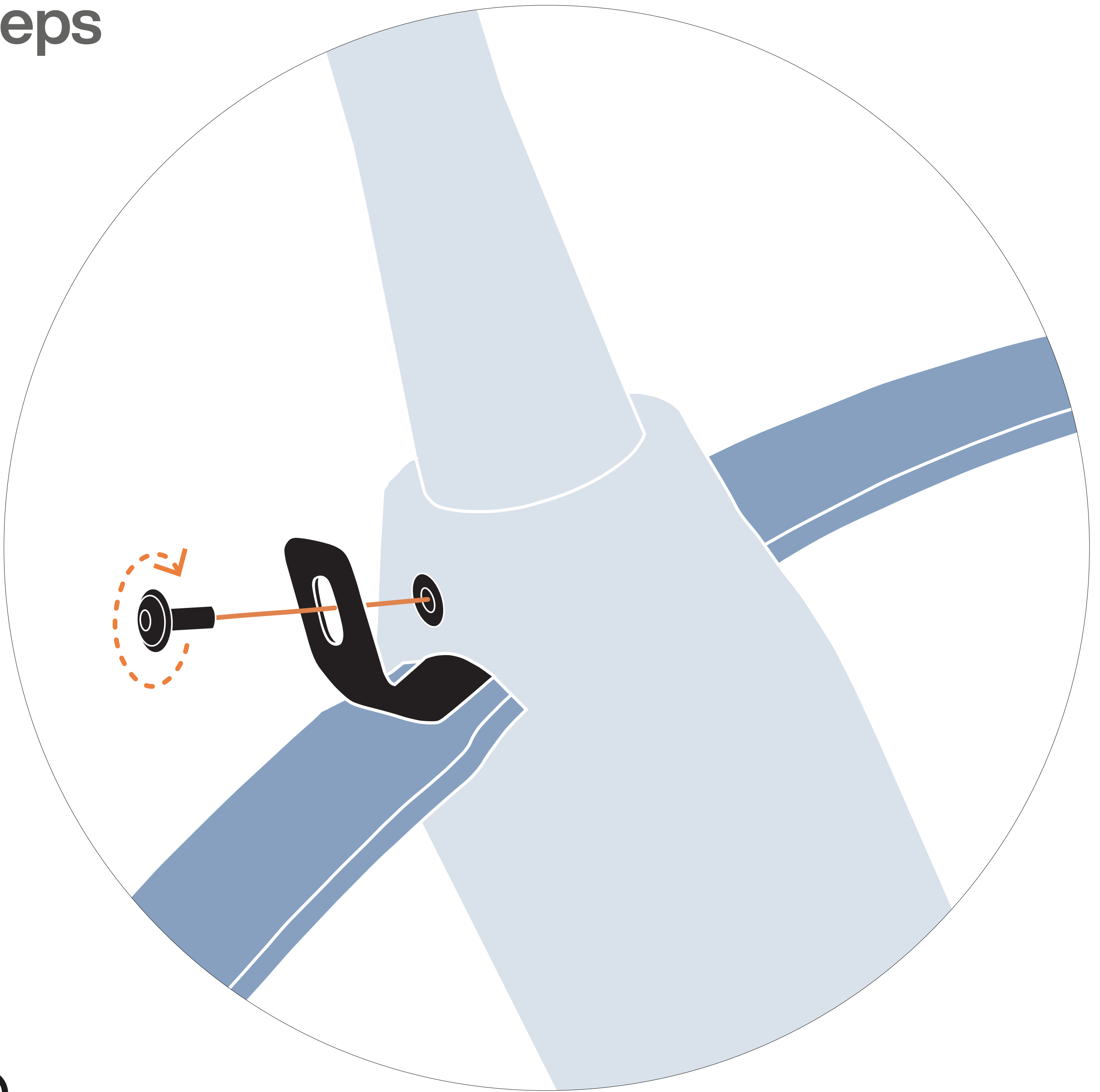
**10** x 4

Écrous M5x6  
M5x6 nut



# Étapes

## Steps



①

Serrez une vis M5x12 dans l'insert en face arrière de la fourche à travers le support de fixation haut.

Positionner la partie en bois de façon à ce que l'espace entre le pneu et le bois soit suffisant.

Couple de serrage  $2.2\text{N.m} \pm 0.2\text{N.m}$

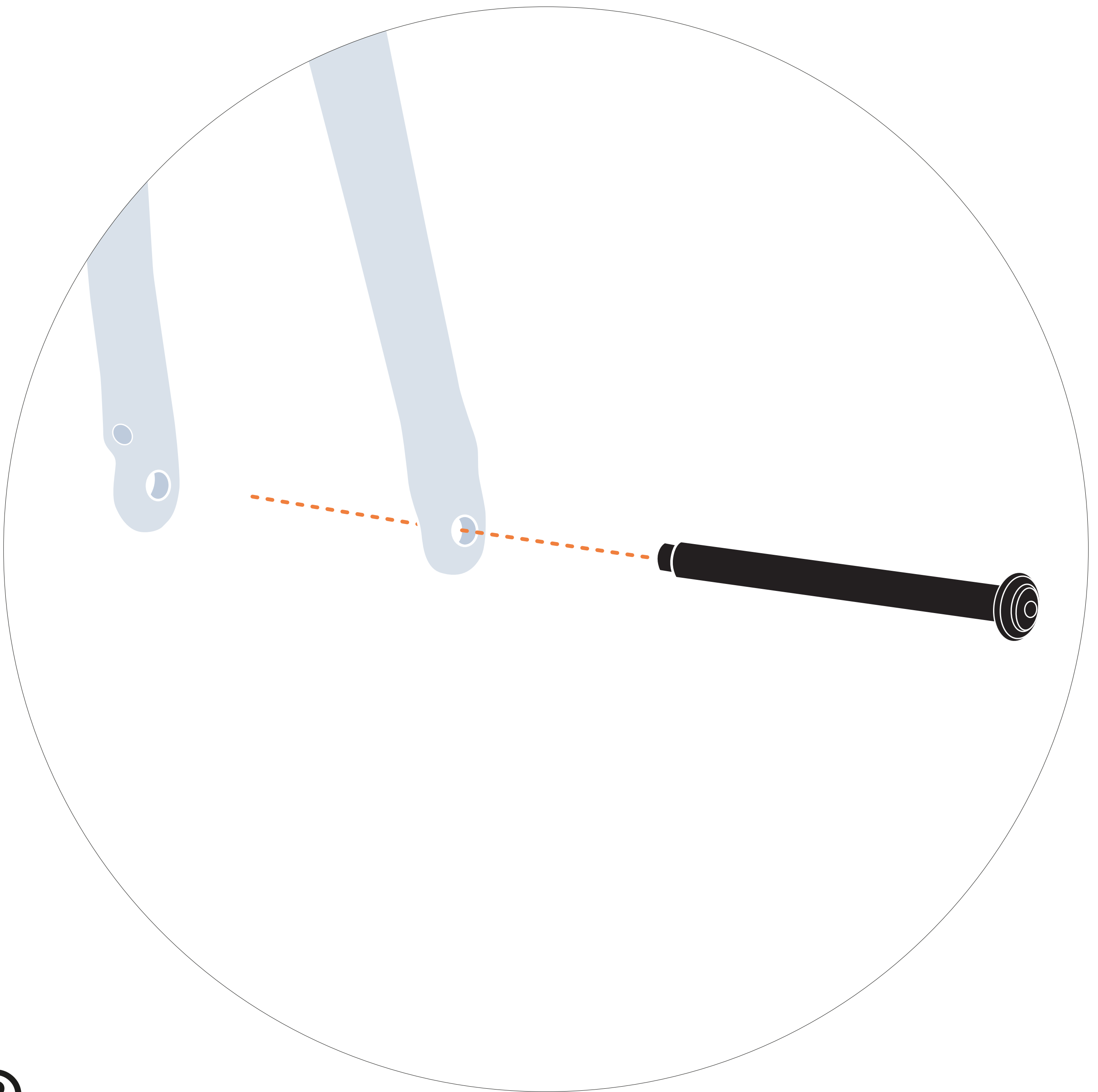
Tighten one M5x12 screw in the inlay of the rear fork through the upper mounting bracket

Position the wooden part to ensure that the space between the tyre and the wooden part is sufficient.

$2.2\text{N.m} \pm 0.2$  tightening torque

# Étapes

## Steps



②

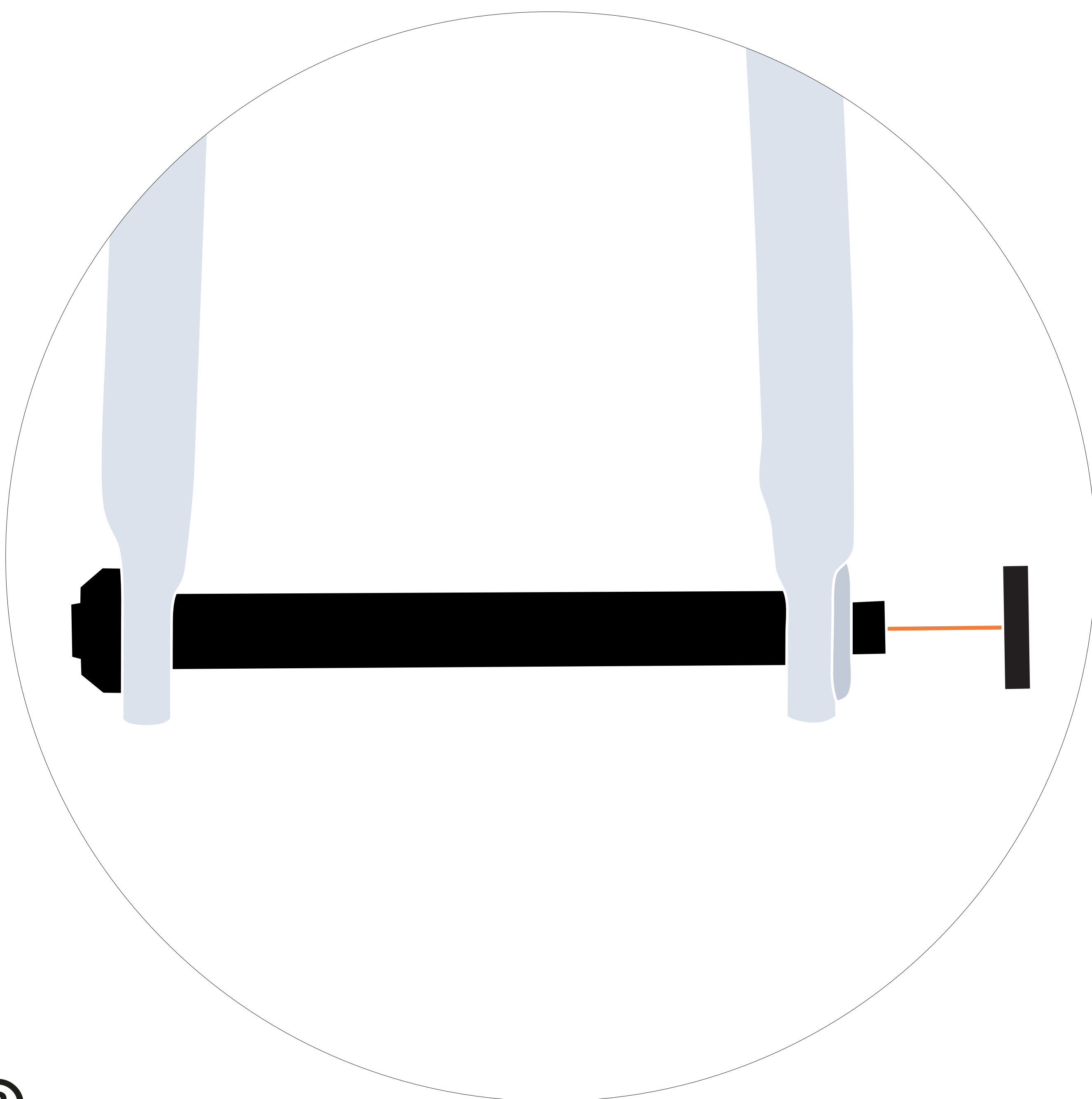
---

Insérer l'axe de roue avant dans la fourche et serrer à l'aide d'une clé plate de taille 14.

Insert the front wheel axle and tighten it using a size 14 spanner.

# Étapes

## Steps



③

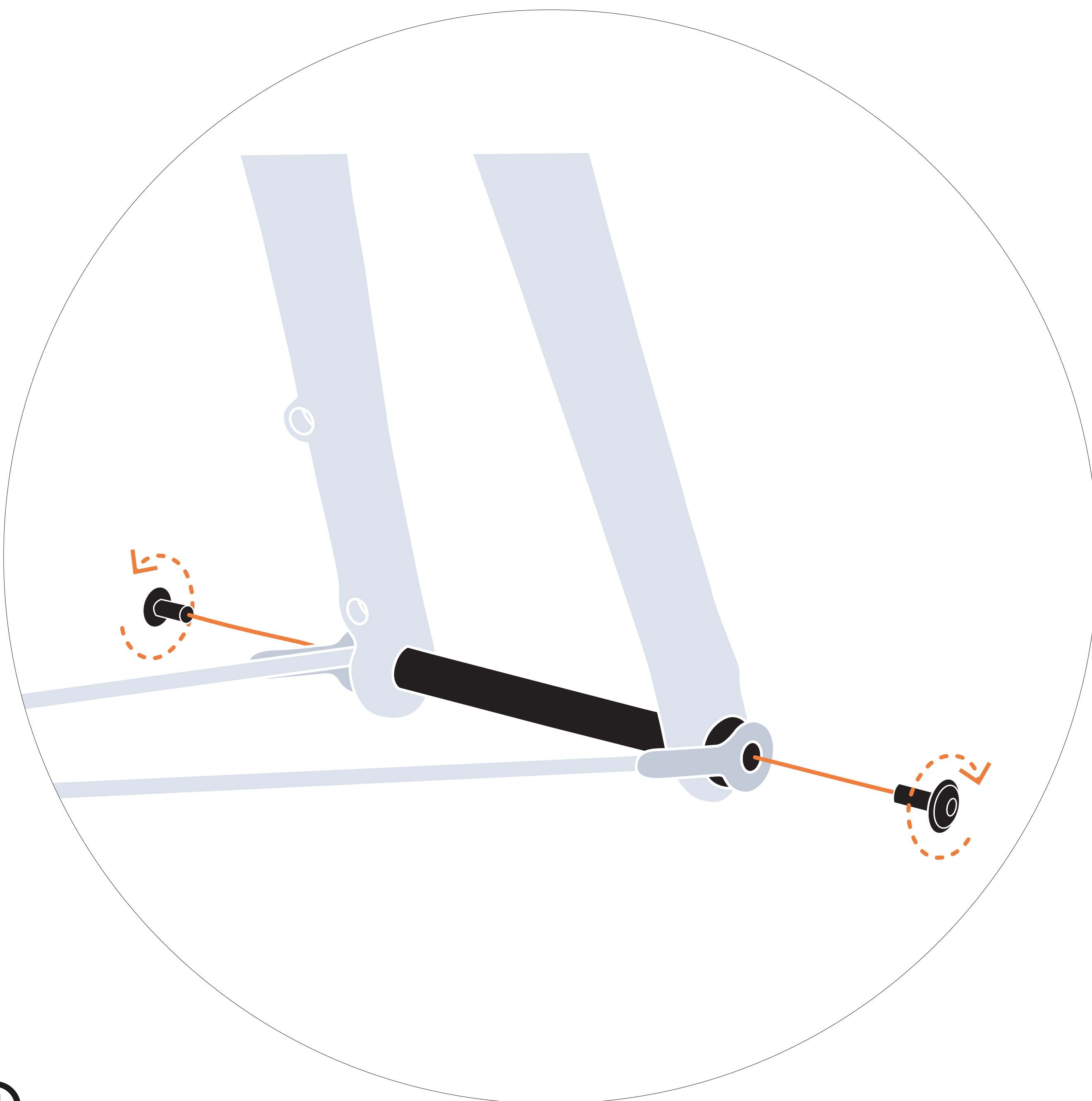
---

Insérer la rondelle à l'extrémité de l'axe de roue avant en appui contre l'écrou.

Insert the washer at the end of the front wheel axle by pressing against the nut.

# Étapes

## Steps



④

Vissez deux vis M5x12 au travers des tringles et de l'axe de roue avant

Couple de serrage 4.2N.m

Screw two M5x12 screws through the rods and the front wheel axle

4.2N.m tightening torque